

Remote Keypad Option

RKP007Z user's manual

Notice

1. Make sure that this instruction manual is delivered to the end user of Remote Keypad.
2. Read this manual before installing or operating the Remote Keypad. Keep it in a safe place for reference.
3. All information contained in this manual is subject to change without notice. Please confirm the latest information on our web site "www.inverter.co.jp".

Safety Precautions

On the inverter and in its instruction manual, important information is contained for preventing injuries to users, damages to assets, and for proper use of the device.

Read the instruction manual attached to the inverter to understand the safety precautions, the symbols and indications completely.

Please adhere to the contents of these manuals at all times.

Please refer to the inverter's instruction manual for detail functions and operation of this unit.

■ Limitation of use

Warning

- Never use the Remote Keypad with any device other than TOSVERT series inverters. Doing so may cause an accident.

■ Handling in general

Warning

- Never disassemble, modify or repair the Remote Keypad. The disassembling may cause electric shocks, fire or injuries. For repairs, call your sales/repair agency.
- Do not put or insert foreign objects such as waste cable, bars or wires into the Remote Keypad. It may lead to electric shocks or fire.
- Do not splash water over the Remote Keypad. It may lead to electric shocks or fire.
- Do not apply a dropping shock or other physical shocks. Otherwise, damage or malfunction will result.
- Turn off the power immediately in case of any abnormalities such as smoke, smell, blind display or abnormal noise. Neglect of these conditions may lead to fire. For repairs, call your sales/repair agency.
- Operate under the environmental conditions prescribed in this instruction manual. Operations under any other conditions may result in malfunction.

■ Disposal

Caution

- If you dispose off the Remote Keypad, have it done by a specialist in industrial waste disposal*. Improper disposal may cause to produce noxious gases and result in accident. (*) Persons who specialize in the processing of waste and known as "Industrial Waste Product Collectors and Transporters" or "Industrial Waste Disposal Persons." If the collection, transport and disposal of industrial waste is done by someone who is not licensed for that job, it is a punishable violation of the law (Laws in regard to cleaning and processing of waste materials).

■ Installation

Warning

- Do not install or operate the Remote Keypad if it is damaged or any part of it is missing. Operating the defective product may lead to electric shocks or fire. For repairs, call your sales/repair agency.
- Do not connect a LAN or telephone modular cable to the Remote Keypad. Doing so may cause a malfunction or accident.
- Do not pull on the cable and the connector. It may cause damage or malfunction.
- Use an emergency stop device and an additional safety device with your system to prevent a serious accident due to the Remote Keypad malfunctions. Usage without any emergency stop device and any additional safety device may cause an accident or injury.
- Use the Toshiba-specified cable for connecting the Remote Keypad. The use of any other cable may cause a malfunction.

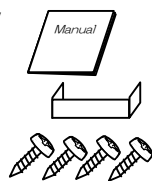
Caution

- Do not install the Remote Keypad in any place subject to vibrations or it may fall. This may lead to the product falling and causing injury.

Accessories

Remote Keypad is shipped together with the following accessories. On opening the packing box, check to see if the following accessories are contained or not.

- (1) User's manual 1 copy (E6581592)
- (2) Key cover 1 pcs.
- (3) Mounting screws (M3 x 10mm) 4 pcs. (M3 screw tightening torque: 0.6 Nm)



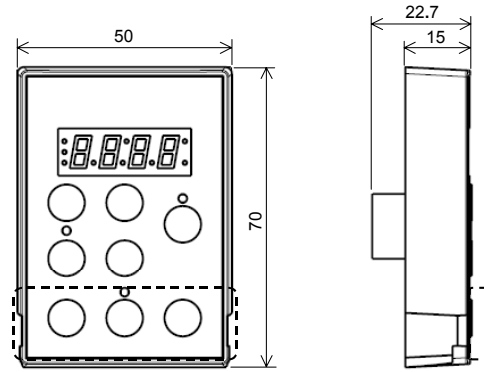
■ Optional parts list

These are not provided with Remote Keypad. They should be purchased separately.

Product Name	Part Number
Interconnection cable (1m)	CAB0071
Interconnection cable (3m)	CAB0073
Interconnection cable (5m)	CAB0075

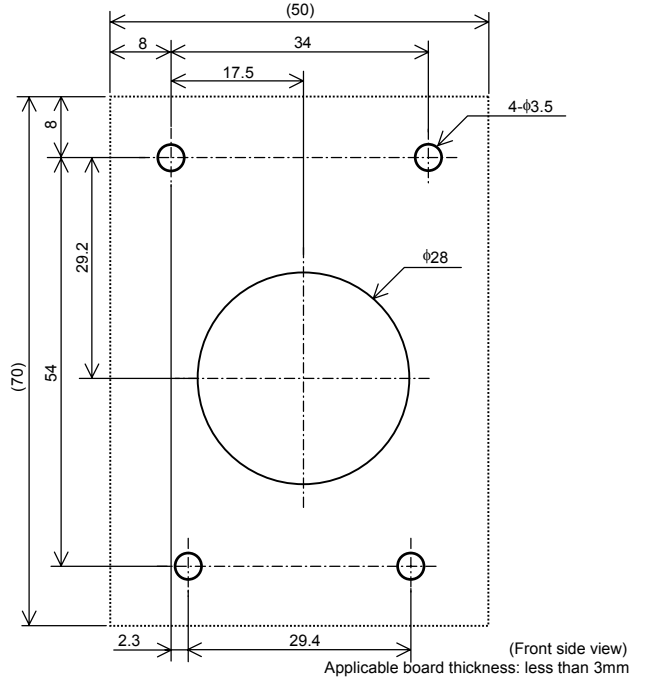
Outline drawing

■ Outline drawing



*Dot Line shows a key cover location

■ Mounting



Product Specification

Item	Specification
Type form	RKP007Z
Applicable model	VF-FS1, VF-nC3 or successor
Communication configuration	Protocol: Modbus RTU Baud rate: 9600, 19200, 38400 bps (Automatic detection) Parity: Even, Odd, None (Automatic detection)
Environment	Indoor operation at an altitude of 3,000m or less. Free from direct sunlight, potentially corrosive or explosive gases, steam, dust particles, dust/dirt, and machining fluids including grinding liquid and coolant.
Ambient temperature	-10 to 60 °C
Storage temperature	-25 to 70 °C
Relative Humidity	20 to 93% (free from condensation and vapor)
Vibration	5.9m/s ² (0.6G) or less (10 to 55 Hz) (IEC60068-2-6)
Protection (IP code)	IP54 (under the condition to be installed on flat panel)* ¹

*1: You should confirm it on your final product, because it depends on the coarseness or the flatness of your panel.

Warranty

Any part of the Remote Keypad that is proved to be defective will be repaired free of charge under the following conditions:

1. This product will be repaired free of charge, if problem/fault occurs under normal handling within one year of delivery and is caused obviously by a design or manufacturing defect.
2. The warranty applies only to the delivered product.
3. For the following kinds of failure or damage, the repair cost shall be borne by the customer even within the warranty period.
 - i) Failure or damage caused by improper or incorrect use or handling, or unauthorized repair or modification of the Remote Keypad.
 - ii) Failure or damage caused by fallings or accidents during transportation after the purchase.
 - iii) Failure or damage caused by fire, salty water or wind, corrosive gas, earthquake, storm or flood, lightning, abnormal voltage supply, or other natural disasters.
 - iv) The damage due to the use of Remote Keypad for non-intended purposes.
4. If an additional warranty is provided then those conditions will also apply.